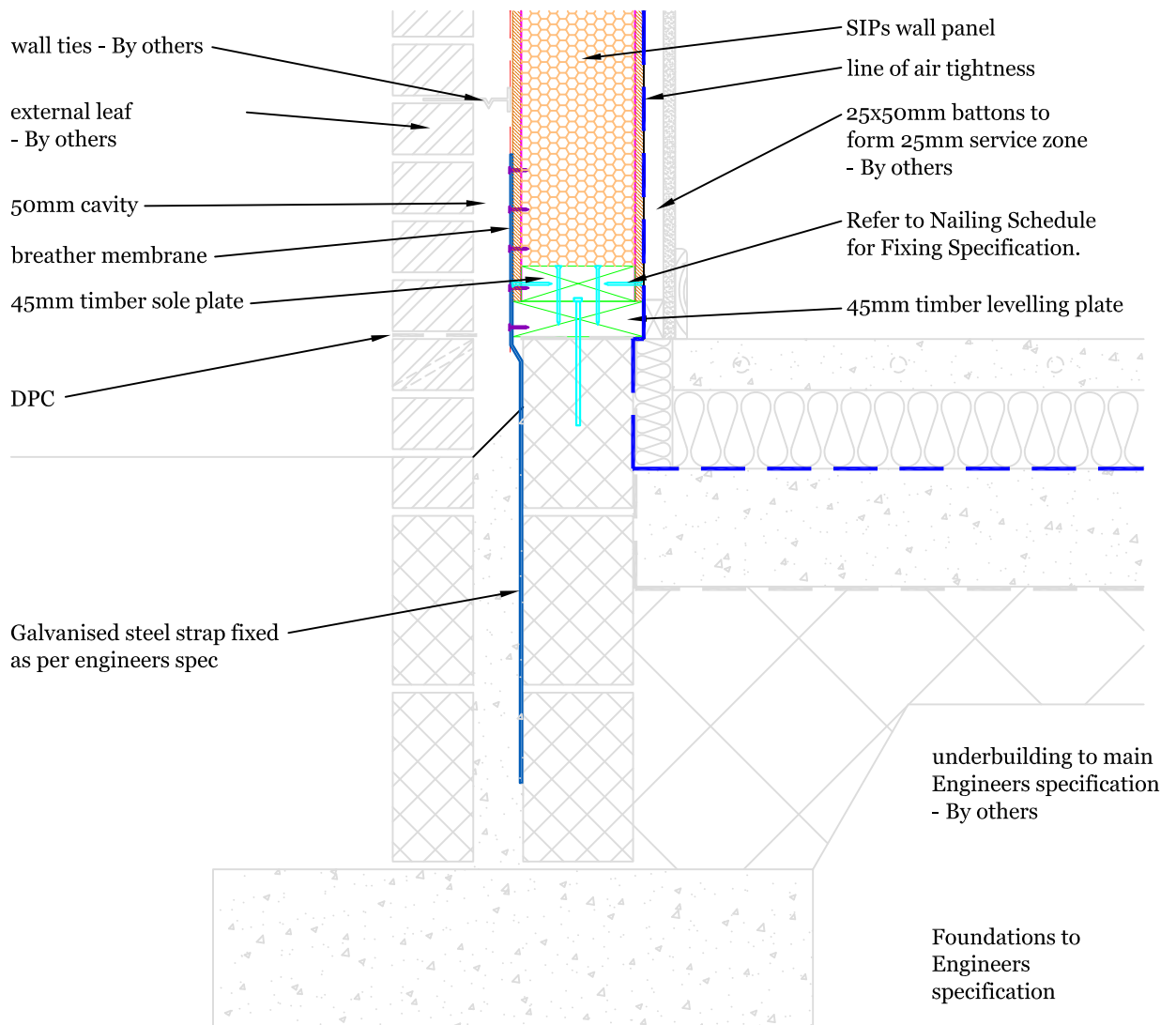


If required for levelling, provide plastic shims to underside of levelling plate. Any voids are to be filled using non-shrink grout by Main Contractor



Sectional Detail - Typical Sub-structure, Concrete Floor with masonry outer leaf



CROSSWAY LTD EST
DULVERTON
KENT TN11 8EJ
Tel: 01893 822818
Email: info@sipsindustries.com
www.sipsindustries.com

THIS DRAWING IS COPYRIGHT AND
AUTHORISATION FROM SIPS INDUSTRIES LTD

Client

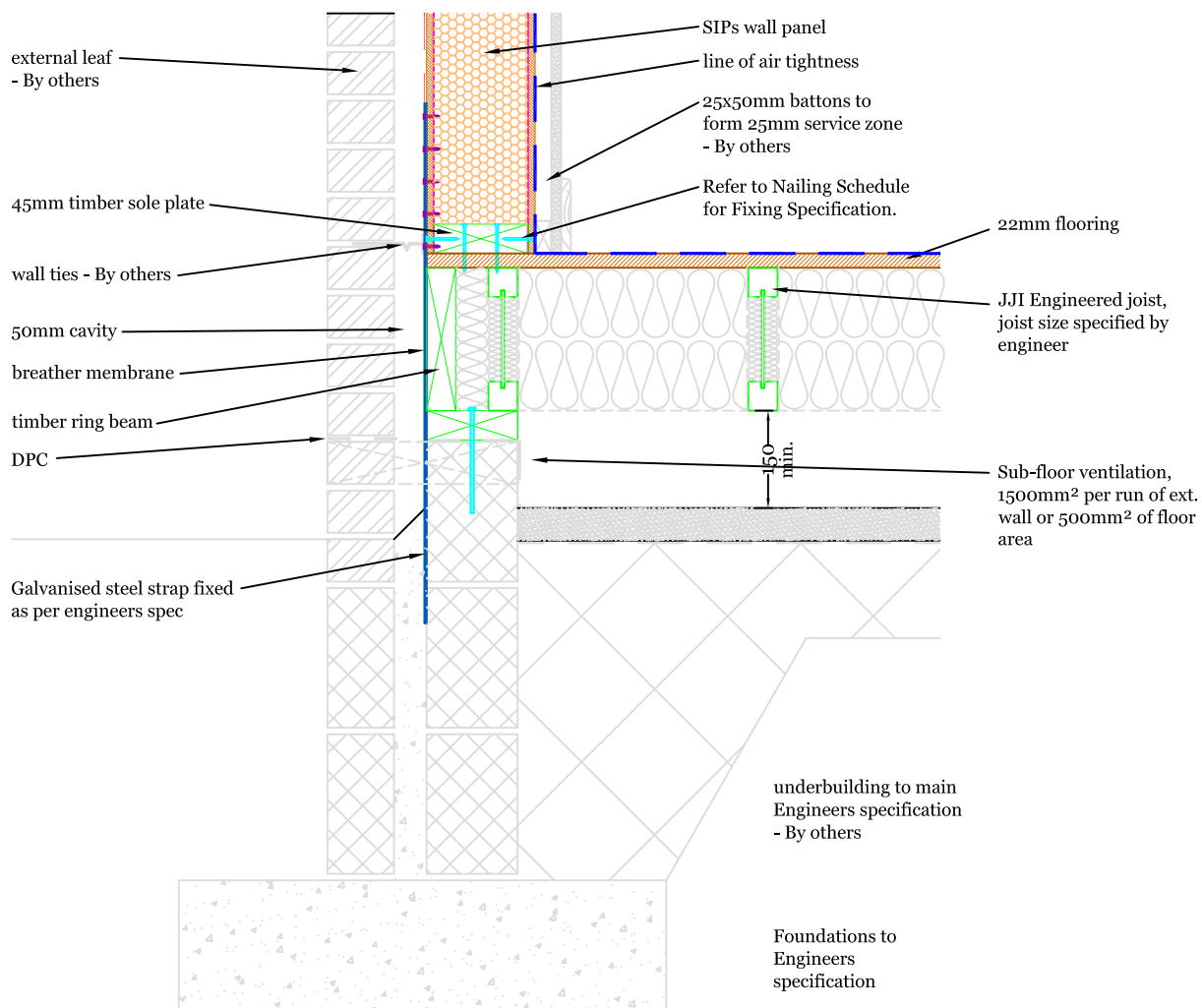
Drawing Title
Sectional Detail - Typical Sub-structure,
Concrete Floor with masonry outer leaf

Scale
NTS

No.
NTS

Drawn By
MJ

Date
01.03.13



Sectional Detail - Typical Sub-structure, Timber Floor with masonry outer leaf

THIS DRAWING IS COPYRIGHT AND
AUTHORISATION FROM SIPS INDUSTRIES LTD

Job

No.

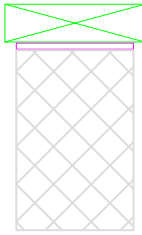
Scale
NTS

Drawn By
MJ

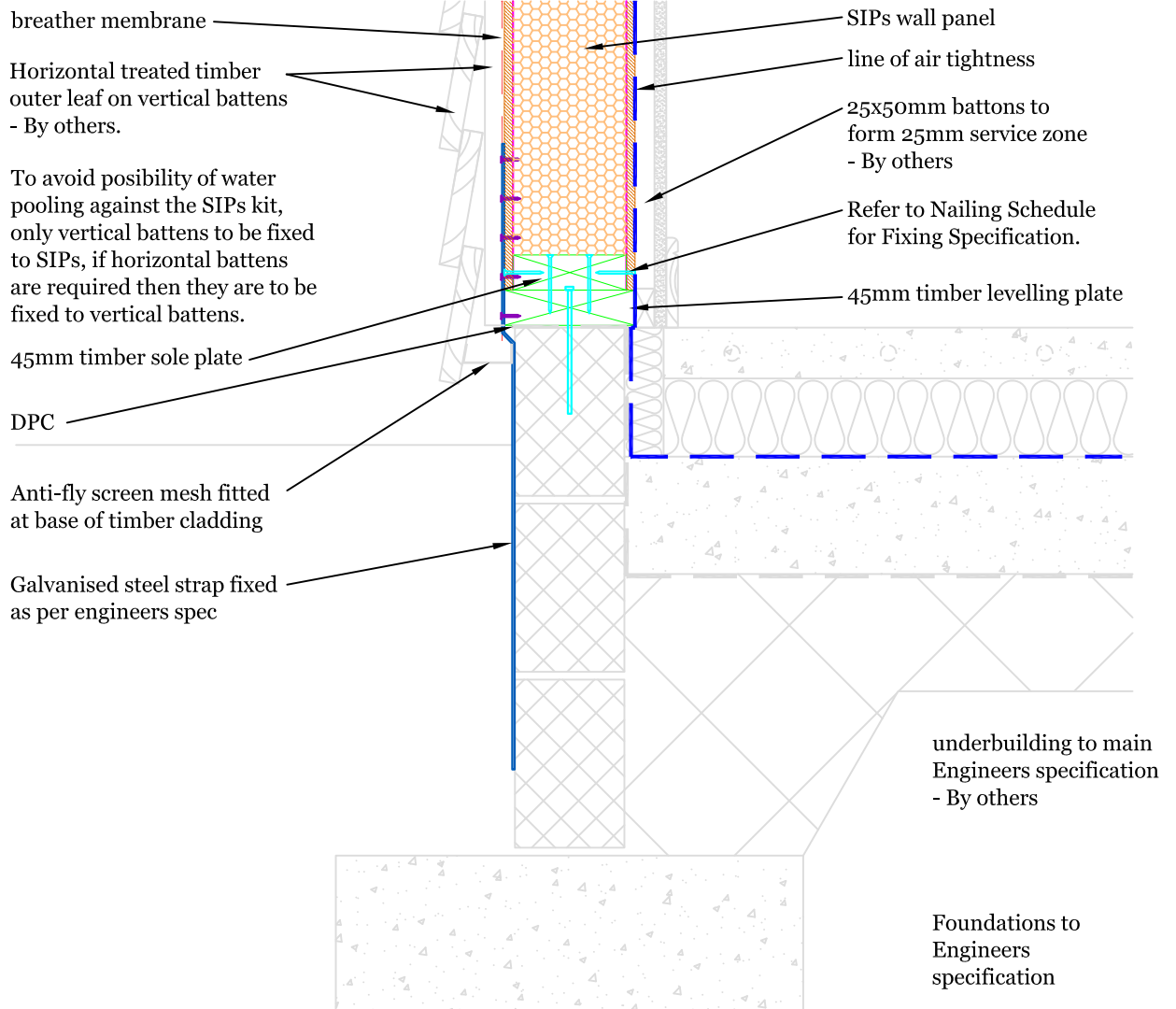
Date
01.03.13

Client

Drawing Title
Sectional Detail - Typical Sub-structure,
Timber Floor with masonry outer leaf



If required for levelling, provide plastic shims to underside of levelling plate. Any voids are to be filled using non-shrink grout by Main Contractor



Sectional Detail - Typical Sub-structure, Concrete Floor with timber cladding outer leaf



CROSSWAY LTD EST
DULVERTON
KENT ME 11 2008
Tel: 01883 822818
Email: info@sipsindustries.com
www.sipsindustries.com

Job

THIS DRAWING IS COPYRIGHT AND
AUTHORISATION FROM SIPS INDUSTRIES LTD

No.

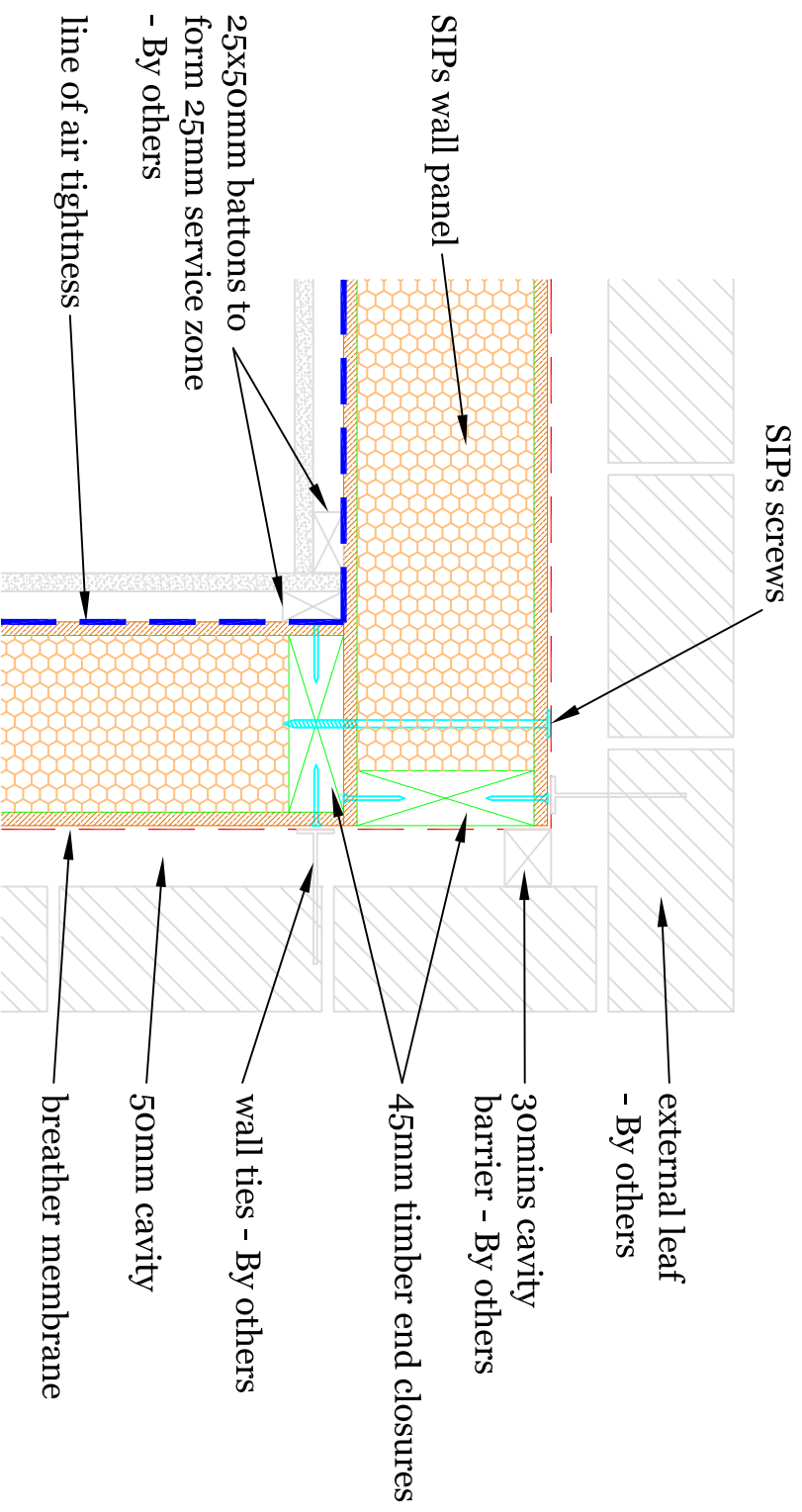
Scale NTS

Drawn By


Date 01.03.13

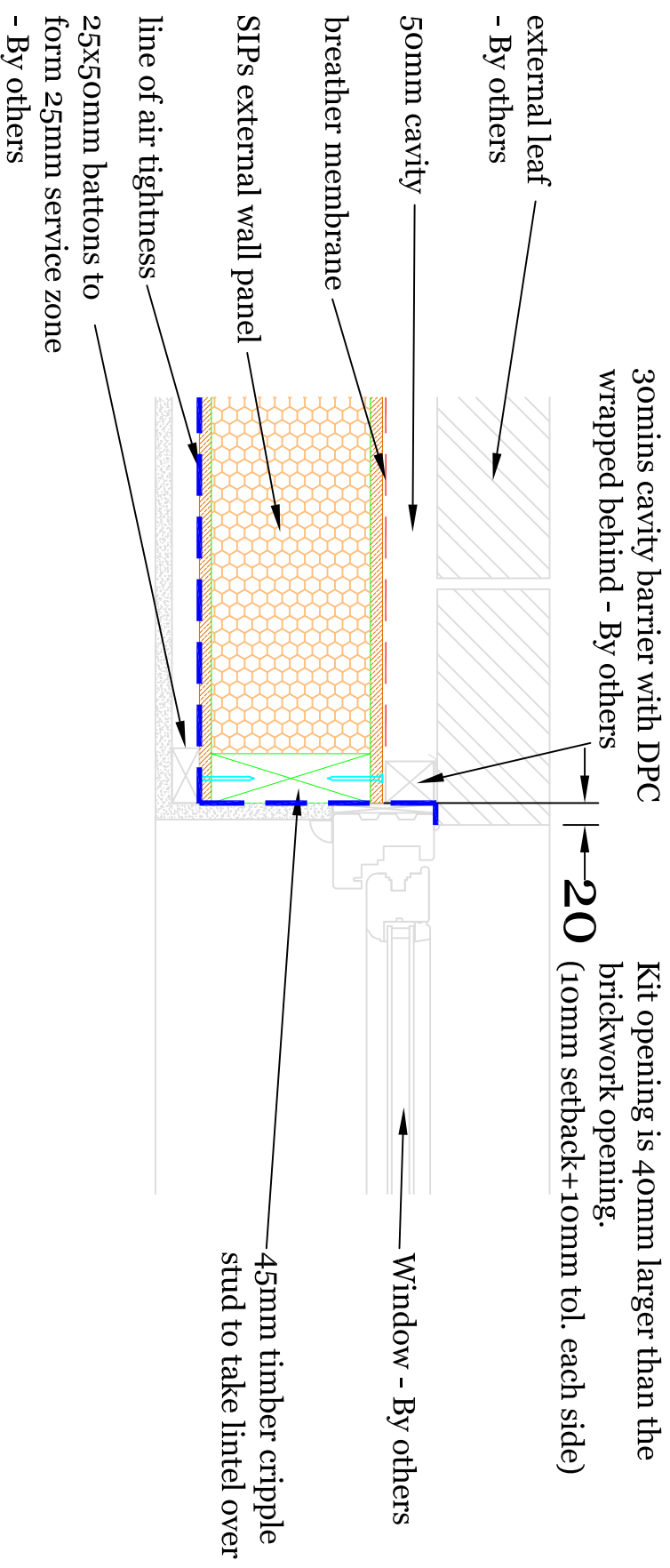
Client

Drawing Title
Sectional Detail - Typical Sub-structure,
Concrete Floor with timber cladding outer leaf



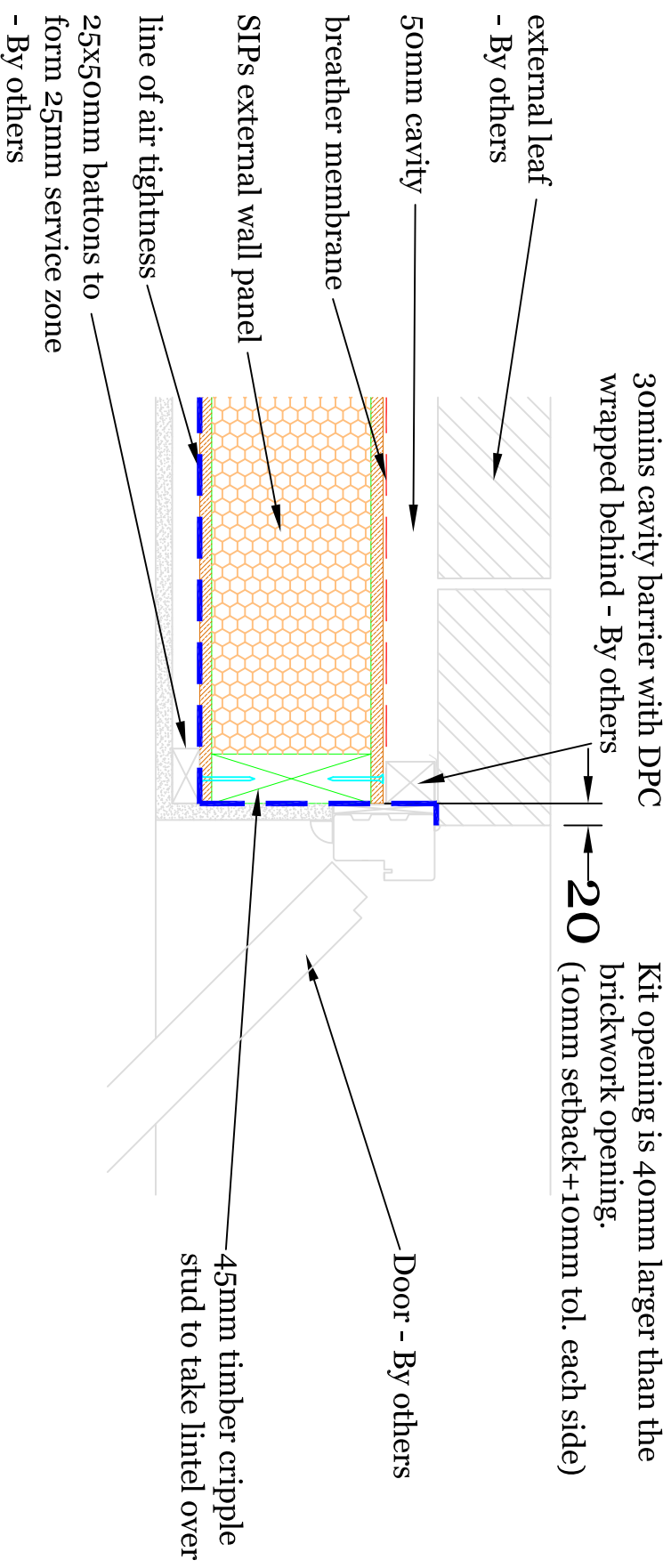
Plan Detail - Typical Panel Corner

<div> <div>  <div> <div>SIPS</div> <div>INDUSTRIES</div> </div> </div> <div> <div>CROSSWAY FHD EST</div> <div>DALEBYE WAY</div> <div>WYTTN</div> <div>NE 253006</div> <div>PAK 01380 822818</div> <div>Email: info@sipsindustries.com</div> <div>www.sipsindustries.com</div> </div> </div>		<div> <div>THIS DRAWING IS COPYRIGHT AND</div> <div>AUTHORISATION FROM SIPS INDUSTRIES LTD</div> </div>	Client	
			<div> <div>Drawing Title</div> <div>Plan Detail</div> <div>Typical Corner</div> </div>	
Job		No.		Scale
				NTS
		Drawn By		MJ
		Date		01.03.13



Plan Detail - Typical Window Jamb

THIS DRAWING IS COPYRIGHT AND AUTHORIZATION FROM SIPS INDUSTRIES LTD		Client	
		Drawing Title Plan Detail Typical Window Jamb	Drawn By MJ
Job		No.	Date
		Scale	01.03.13
		NTS	



Plan Detail - Typical Door Jamb



CROSSWAY LTD EST
 DULVERTON
 KY11 1NE
 01386 832206
 Email: info@sipsindustries.com
 www.sipsindustries.com

THIS DRAWING IS COPYRIGHT AND
 AUTHORIZATION FROM SIPS INDUSTRIES LTD

Job

Client

Drawing Title
 Plan Detail
 Typical Door Jamb

No.

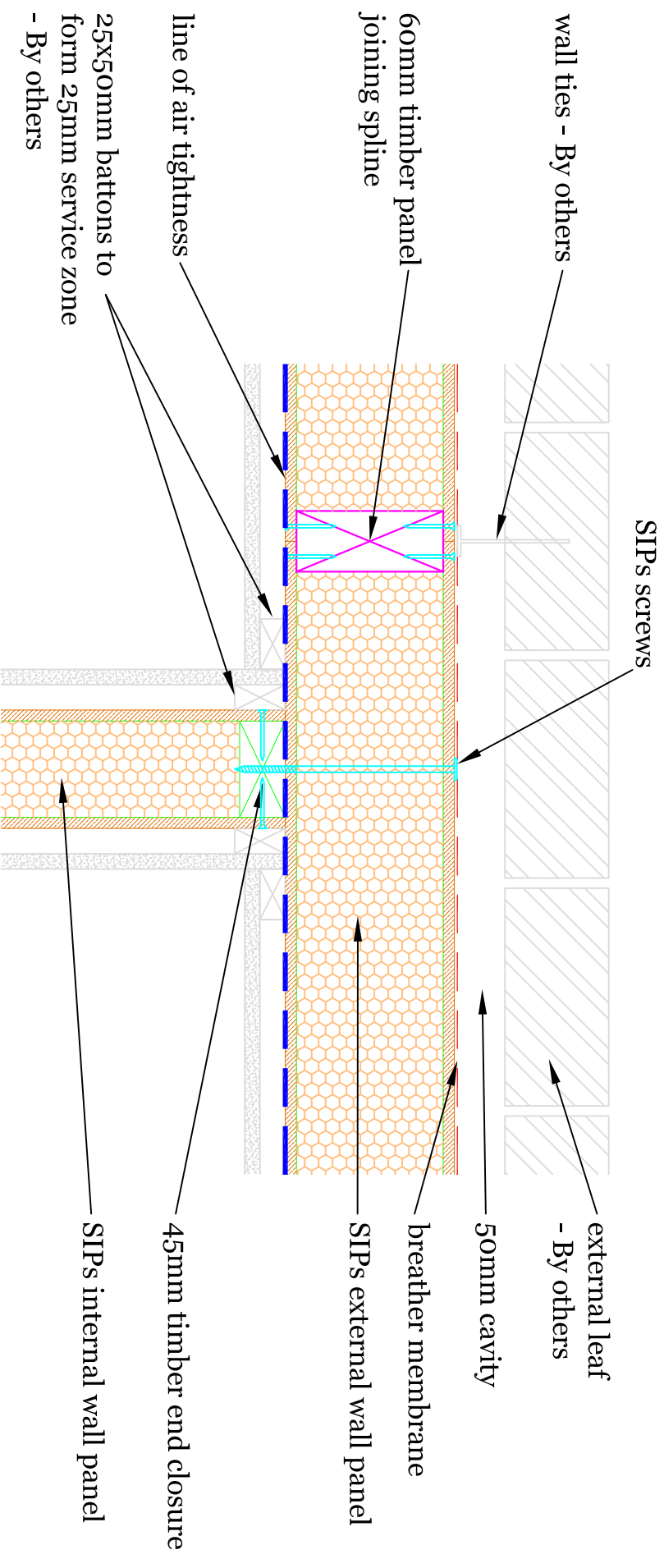
Scale
 NTS

Drawn By
 MJ

Date
 01.03.13



Plan Details - Panel Joining

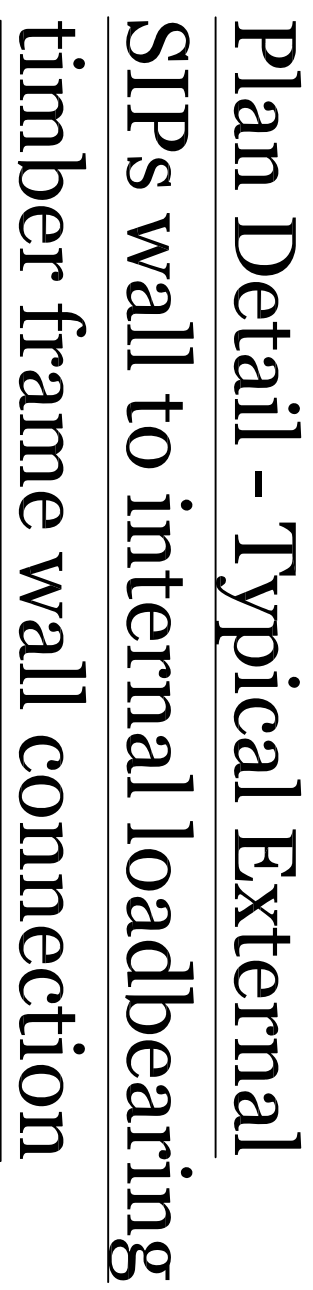


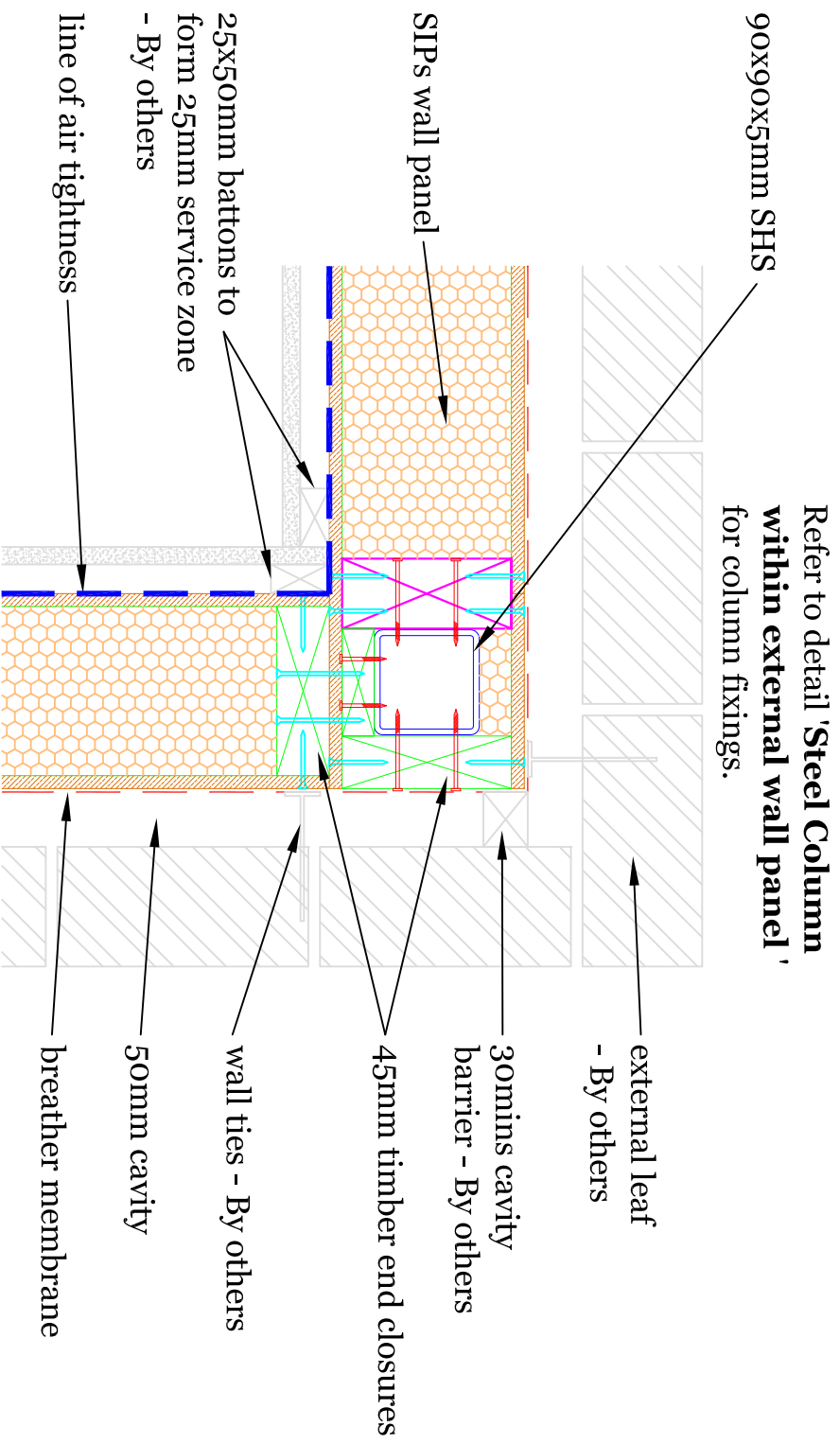
Plan Detail - Typical

External to Internal SIPs

wall connection

<small>THIS DRAWING IS COPYRIGHT AND AUTHORISATION FROM SIPS INDUSTRIES LTD</small>		Client	
Job	Drawing Title		
	Plan Detail		
No.	Typical Ext to Int SIPs wall connection		
	Scale	Drawn By	Date
	NTS	MJ	01.03.13





Plan Detail - Corner Steel column within SIPs Panel



CROSSWAY LTD EST
DULVERTON
NORTH DEVON
PL20 9JG
Tel: 01388 822918
Email: info@sipsindustries.com
www.sipsindustries.com

THIS DRAWING IS COPYRIGHT AND
AUTHORISATION FROM SIPS INDUSTRIES LTD

Job

Client

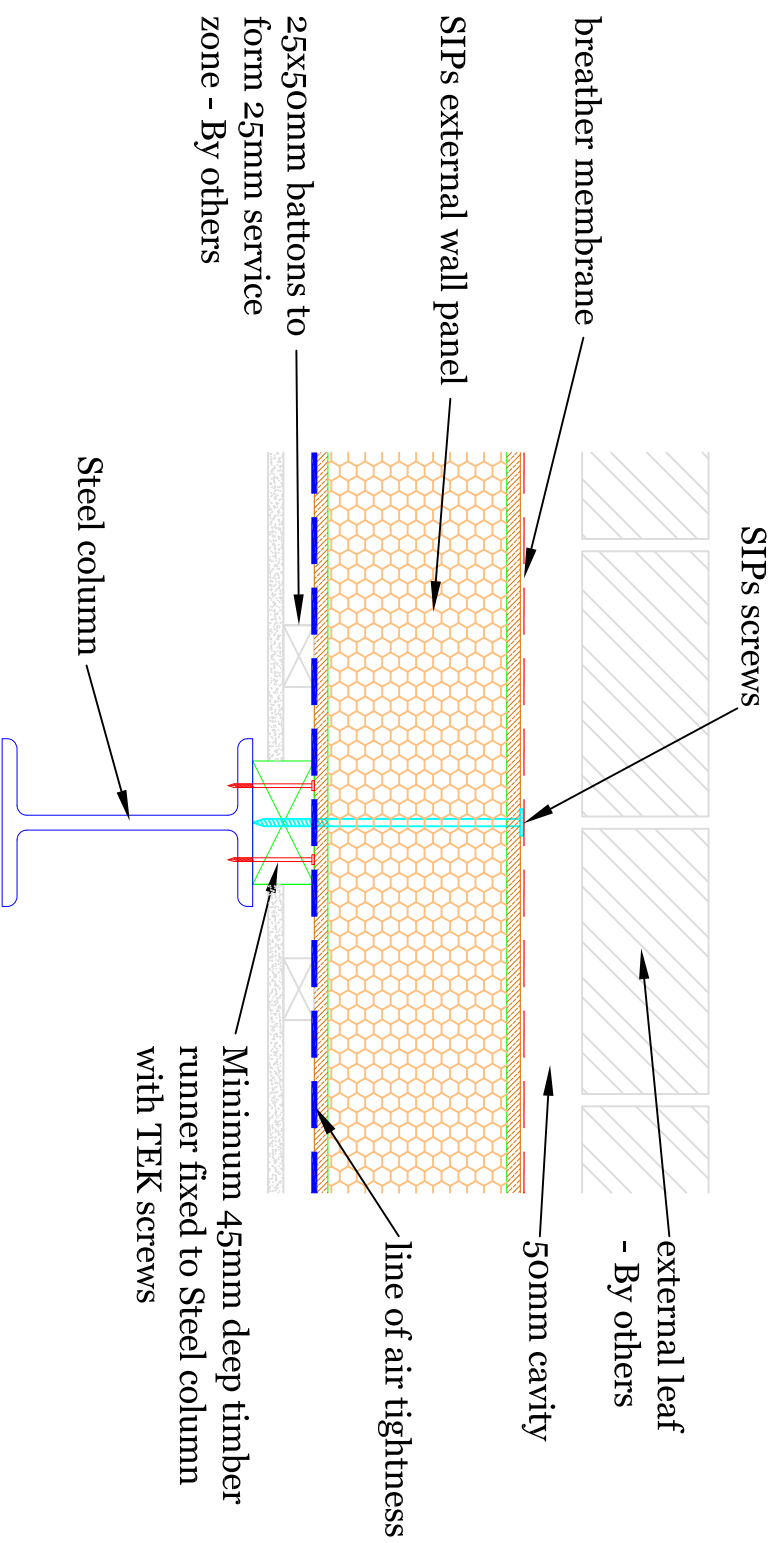
Drawing Title
Plan Detail
SIPs wall to Ghillem column fixing

No.

Scale
NTS

Drawn By
MJ

Date
01.03.13



Plan Detail - SIPs wall to Steel column fixing

(preferred method to limit air infiltration)



CROSSWAY LTD EST
DULVERTON
NPT 23 5E
01306
Fax: 01306 822816
Email: info@sipsindustries.com
www.sipsindustries.com

THIS DRAWING IS COPYRIGHT AND
AUTHORISATION FROM SIPS INDUSTRIES LTD

Job

Client

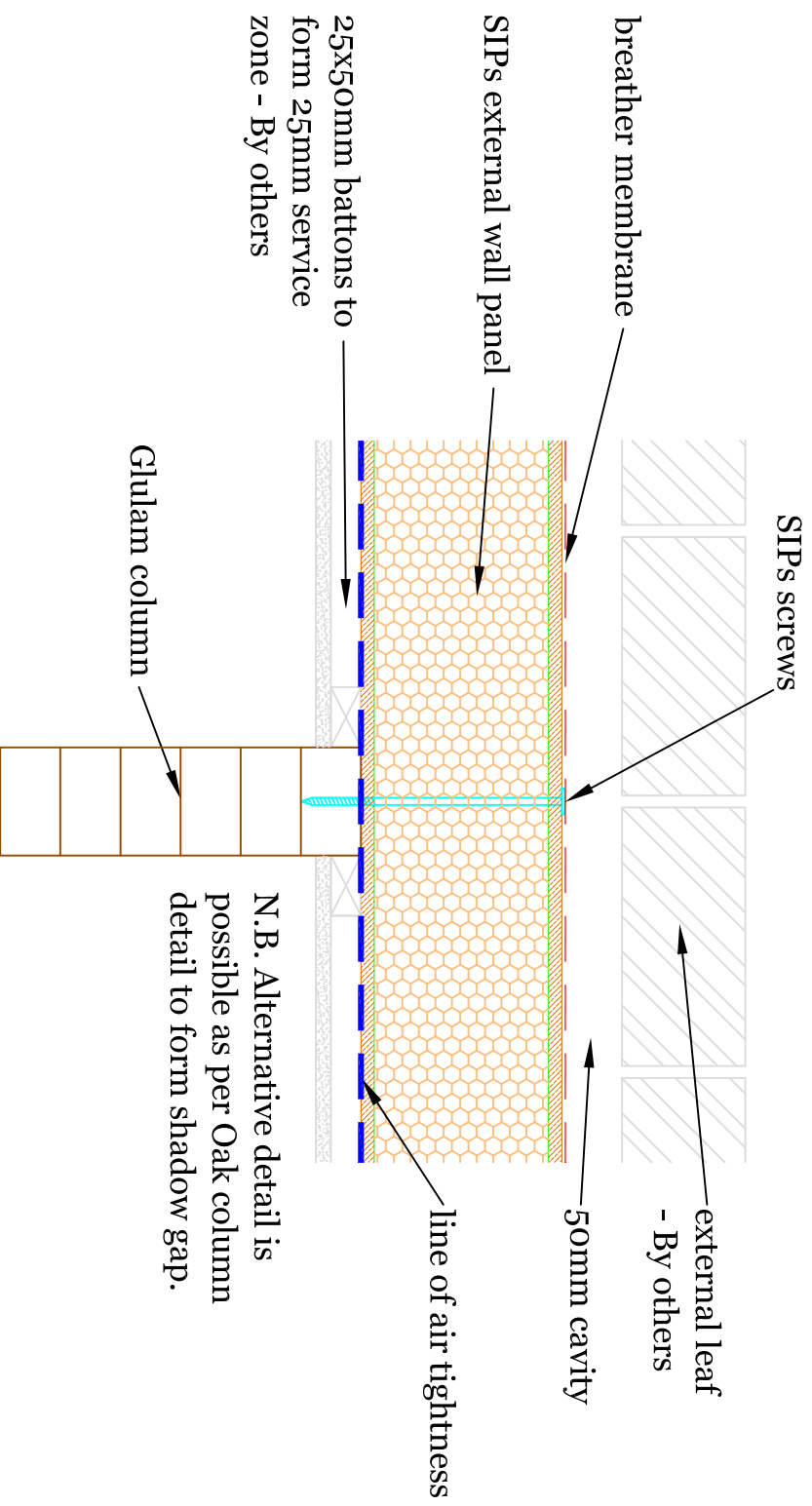
Drawing Title
Plan Detail
SIPs wall to Steel column fixing

No.

Scale

Drawn By
MJ

Date
01.03.13

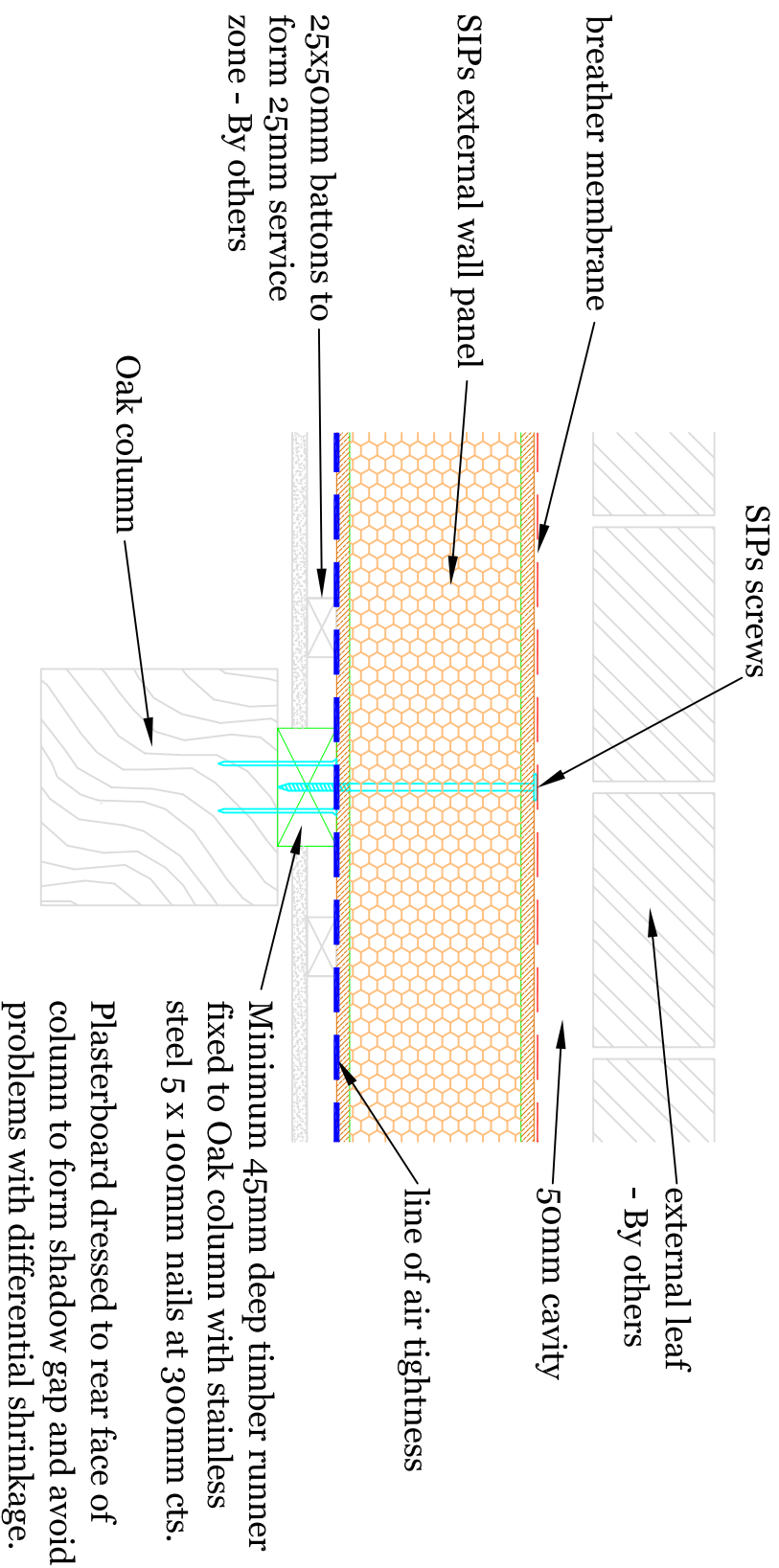


Plan Detail - SIPs wall to Glulam column fixing (preferred method to limit air infiltration)

<small>THIS DRAWING IS COPYRIGHT AND AUTHORISATION FROM SIPs Industries Ltd</small>		Client	
Job	Drawing Title		Date
	SIPs wall to Glulam column fixing		01.03.13
No.	Scale	Drawn By	
	NTS	MJ	

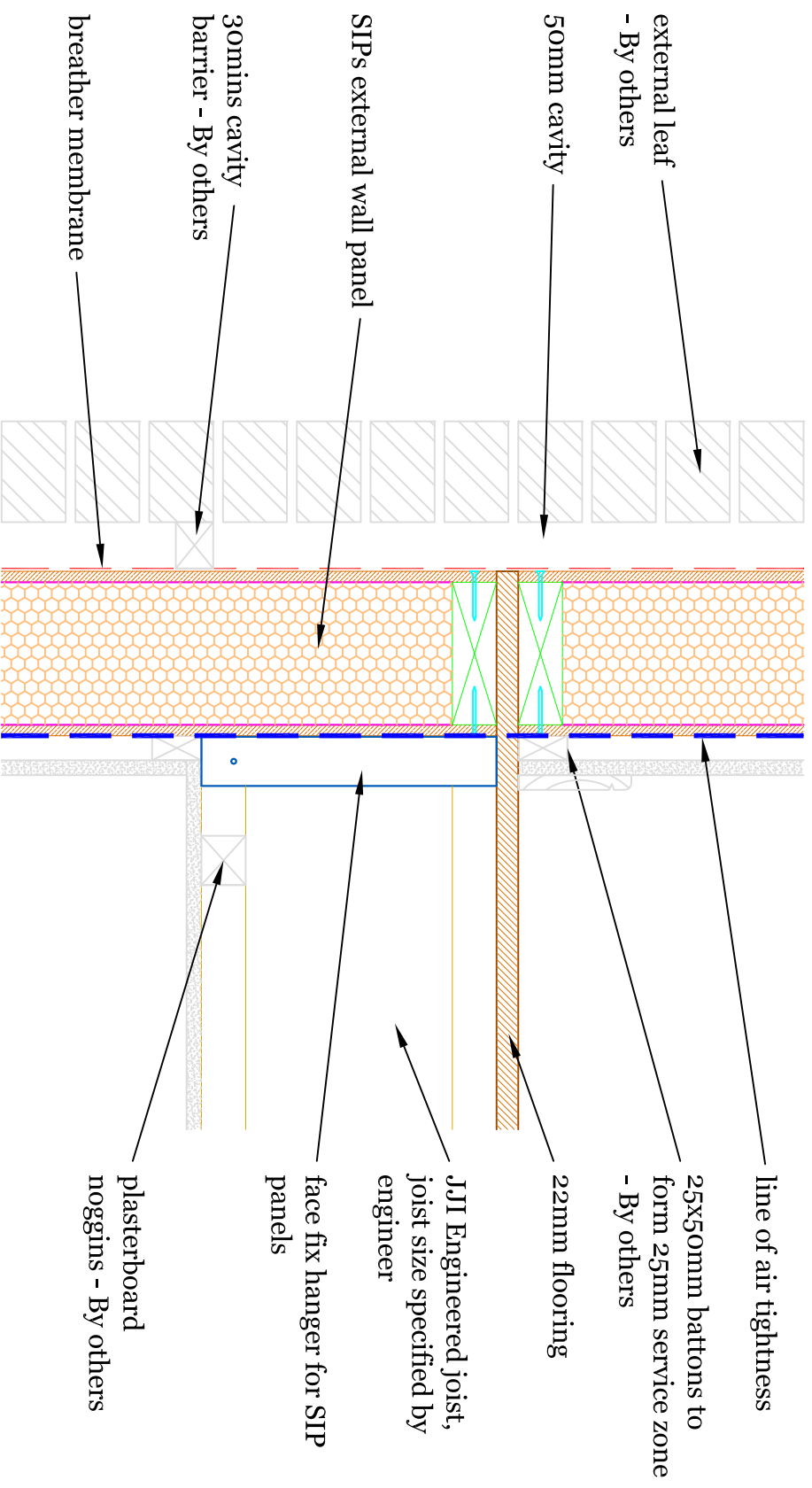


CROSSWAY FIBRE EST
 DALGETY BAY
 KY11 1AE
 TEL: 01380 822896
 FAX: 01380 822818
 Email: info@sipsindustries.com
 www.sipsindustries.com

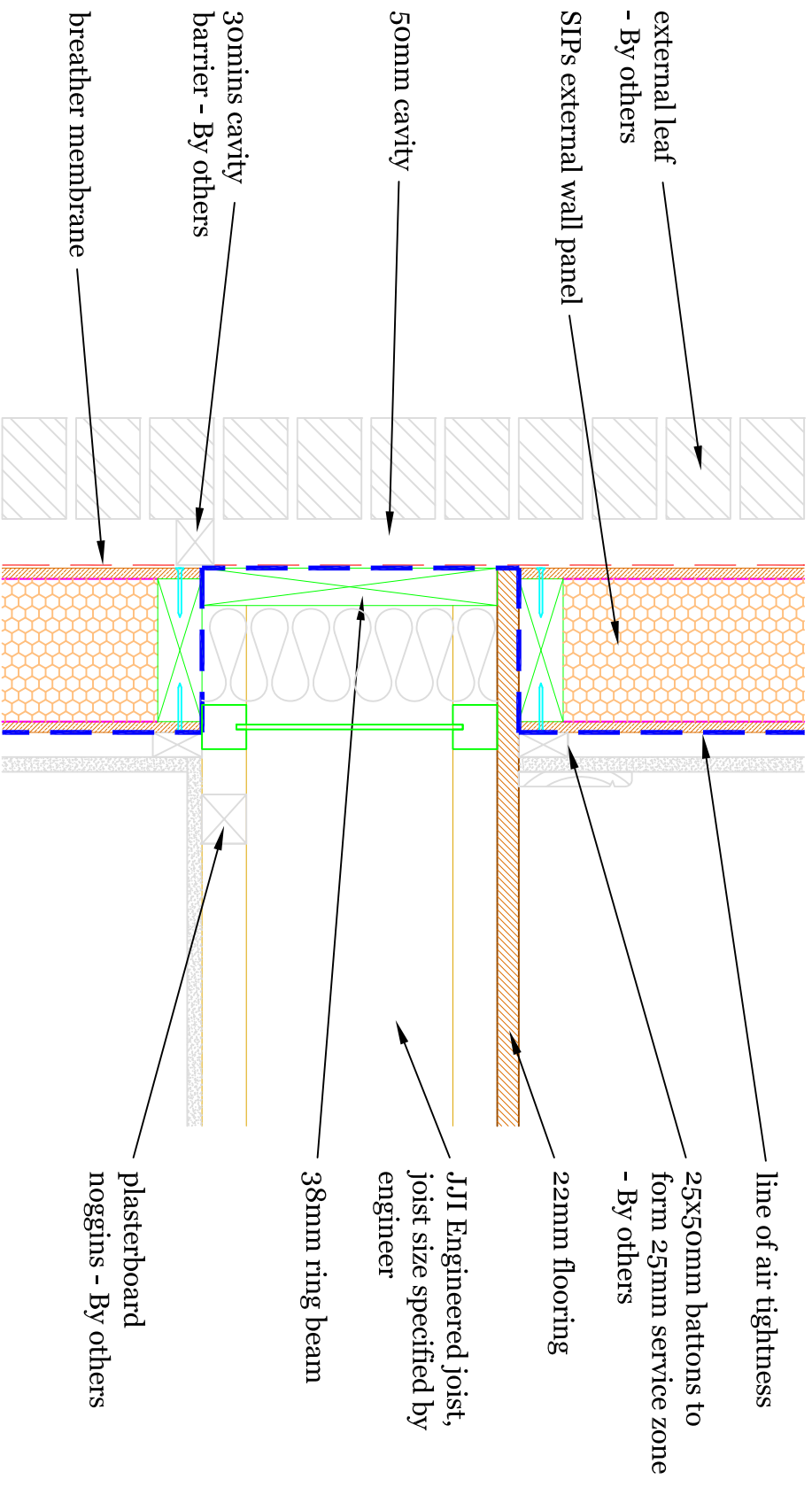


Plan Detail - SIPs wall to Oak column fixing (preferred method to limit air infiltration)

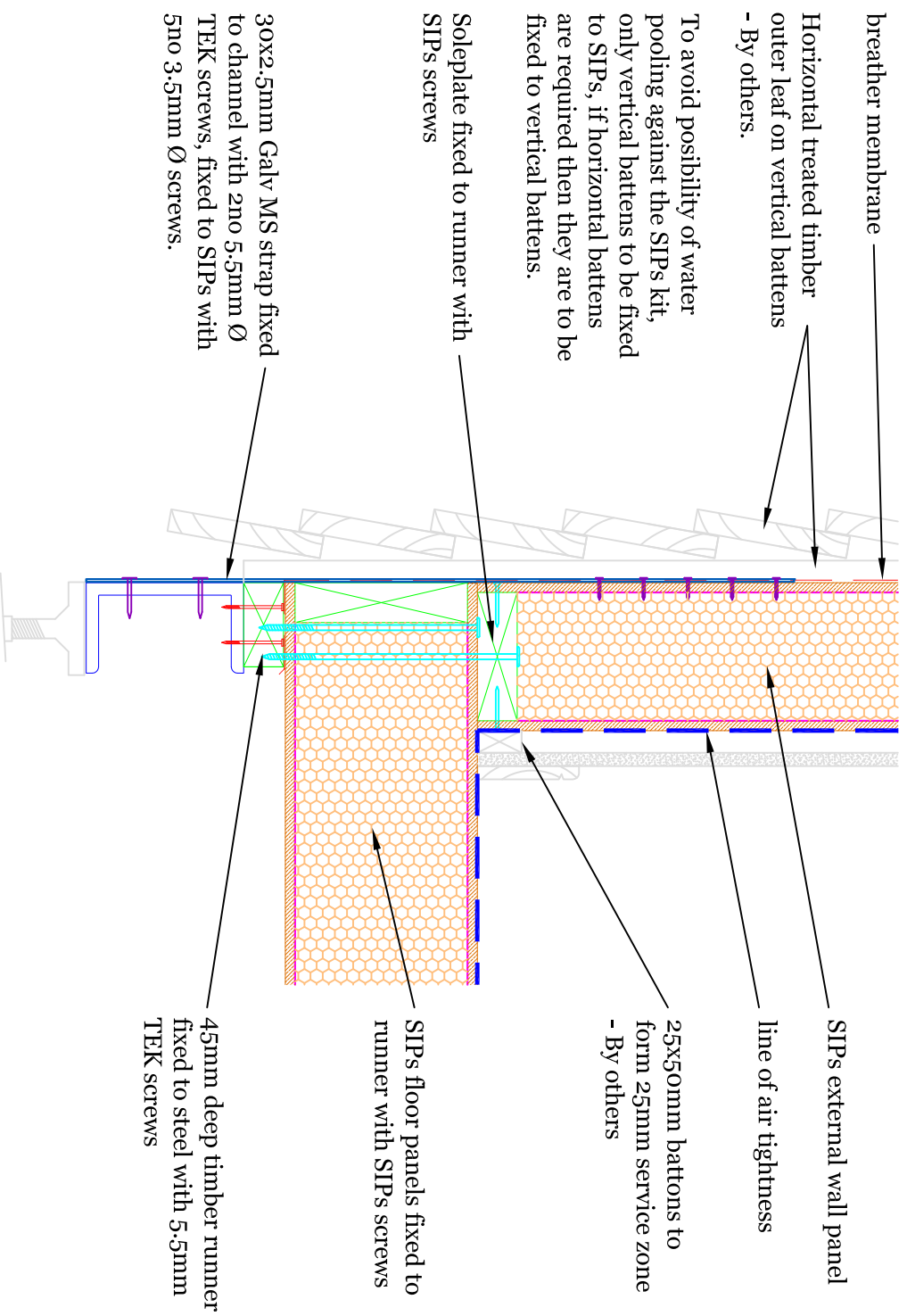
<small>THIS DRAWING IS COPYRIGHT AND AUTHORISATION FROM SIPS INDUSTRIES LTD</small>		Client	
Job	Drawing Title		
	SIPs wall to Oak column fixing		
No.	Scale	Drawn By	Date
	NTS	MJ	01.03.13



Sectional Detail - Typical Floor Zone



Sectional Detail - Alternative Floor Zone



Sectional Detail - SIPs Panel Floor



CROSSWAY LTD EST
 DULVERTON
 KY11 1NE
 Tel: 01386 822806
 Email: info@sipsindustries.com
 www.sipsindustries.com

THIS DRAWING IS COPYRIGHT AND
 AUTHORIZATION FROM SIPS INDUSTRIES LTD

Job

Client

Drawing Title
 Sectional Detail
 SIPs Panel Floor

No.

Scale

Drawn By

Date

NTS

MJ

01.03.13

Roof slate fixed to
22mm x 50mm Battens
or 19 x 150mm Sarking
on 25mm x 50mm Battens
- By others

breather membrane

45mm wide timber end
closure

SIPs Screws

60mm timber joining
spline supplied oversized,
to be trimmed back on site
(by others) to required
plumb/square cut for
fitting of fascia, soffit etc.

continuous air vent in soffit

SIPs roof panel

25x50mm battens to
form 25mm service zone
- By others

Profiled timber packers to
suit roof pitch

Oak member

timber packer - Stainless
Steel fixings to be used for
fixing into Oak

45mm timber head binder

breather membrane

line of air tightness

SIPs wall panel

Timber cladding & battens
- By others

Sectional Detail - Typical Oak Frame Roof Eaves

Job

THIS DRAWING IS COPYRIGHT AND
AUTHORISATION FROM SIPS INDUSTRIES LTD

No.

Scale

NTS

Drawn By

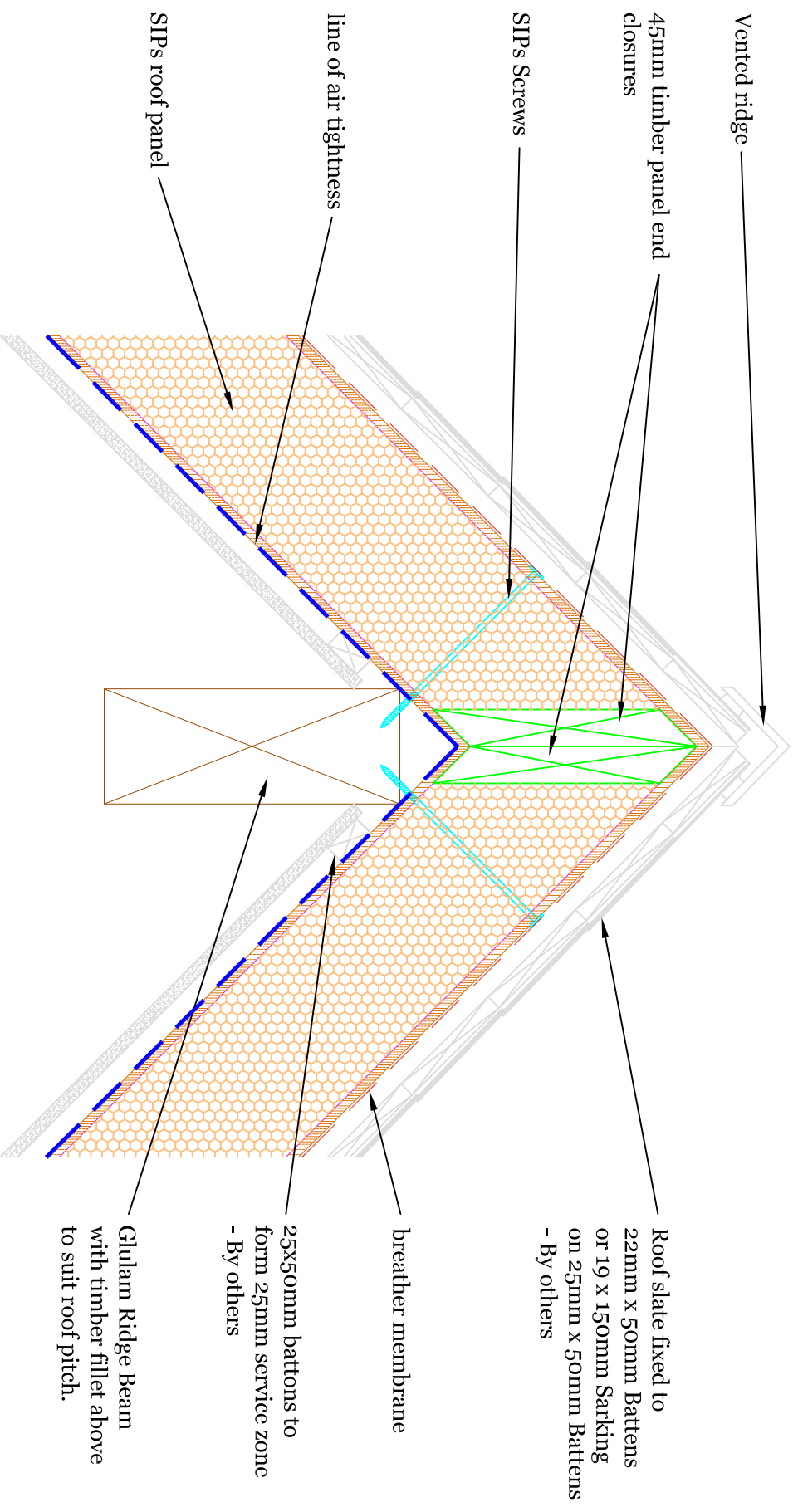
MJ

Date

01.03.13

Client

Drawing Title
Sectional Detail
Typical Oak Frame Roof Eaves



Sectional Detail - Typical Glulam Ridge Beam



CROSSWAY LTD EST
 DUNDEE BAY
 KY11 1NE 732006
 Tel: 01380 822818
 Email: info@sipsindustries.com
 www.sipsindustries.com

THIS DRAWING IS COPYRIGHT AND
 AUTHORIZATION FROM SIPS INDUSTRIES LTD

Job

Client

Drawing Title
 Sectional Detail
 Typical Glulam Ridge Beam

No.

Scale

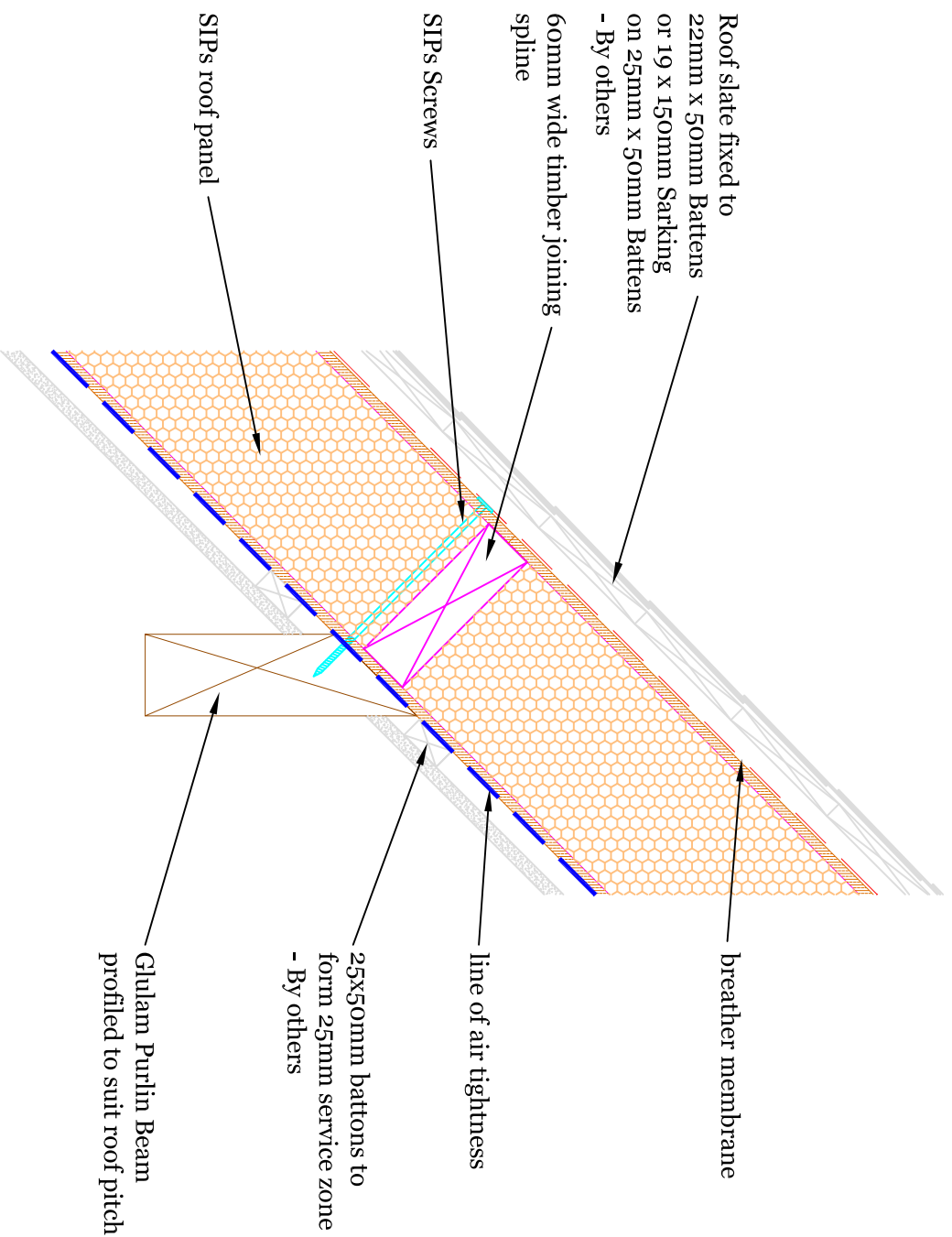
Drawn By

Date

NTS

MJ

01.03.13



Sectional Detail - Typical

Glulam Purlin Beam



CHESWAVE HUB EST
DULVERTON
NPT 15 123006
PAC 01383 822918
Email: info@sipsindustries.com
www.sipsindustries.com

THIS DRAWING IS COPYRIGHT AND
AUTHORISATION FROM SIPS INDUSTRIES LTD

Job

Client

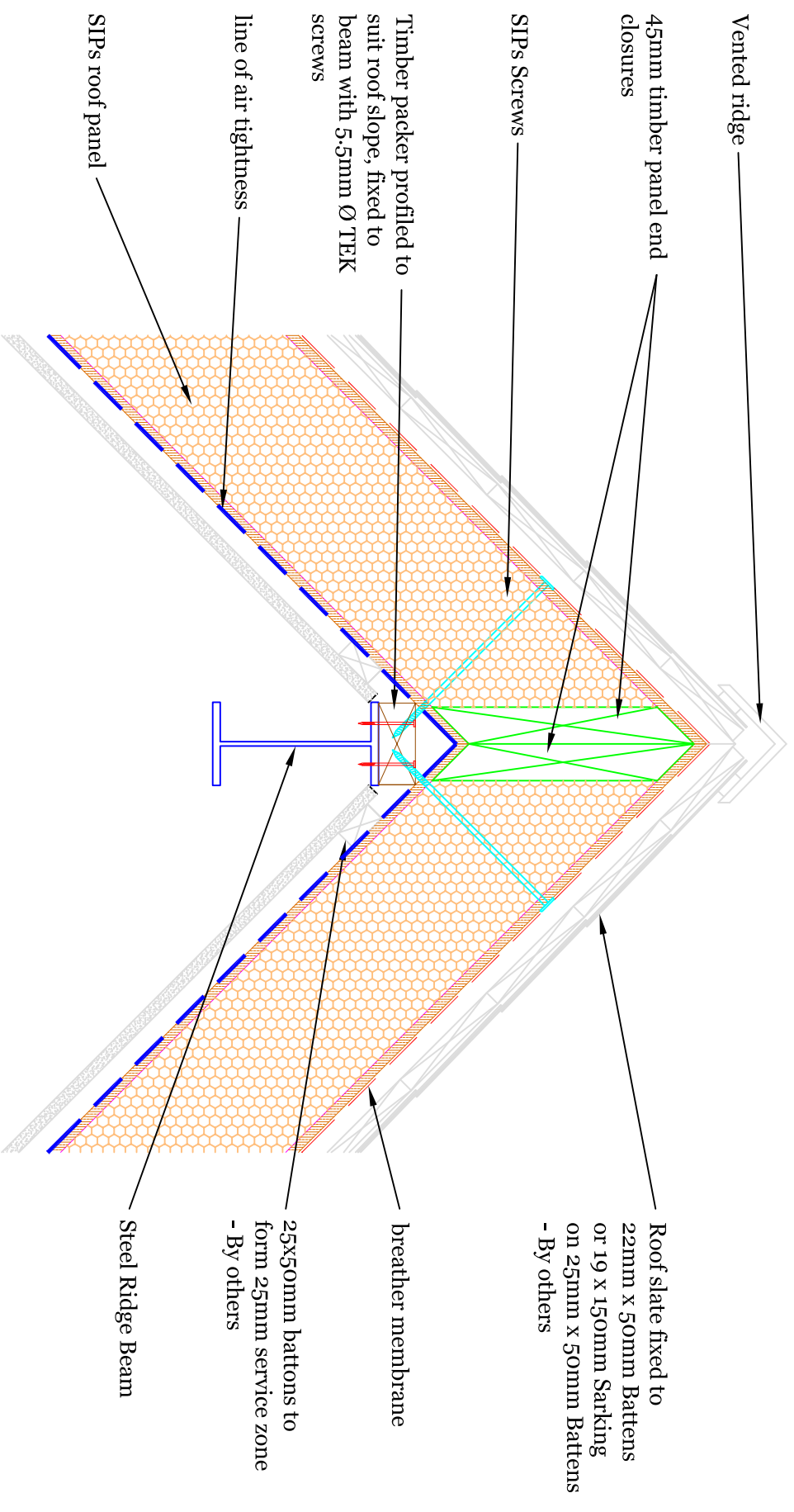
Drawing Title
Sectional Detail
Typical Glulam Purlin Beam

No.

Scale
NTS

Drawn By
MJ

Date
01.03.13



Sectional Detail - Typical Steel Ridge Beam



CROSSWAY LTD EST
 DULVERTON
 KY11 1NE
 TEL: 01383 822806
 FAX: 01383 822818
 Email: info@sipsindustries.com
 www.sipsindustries.com

THIS DRAWING IS COPYRIGHT AND
 AUTHORIZATION FROM SIPS INDUSTRIES LTD

Job

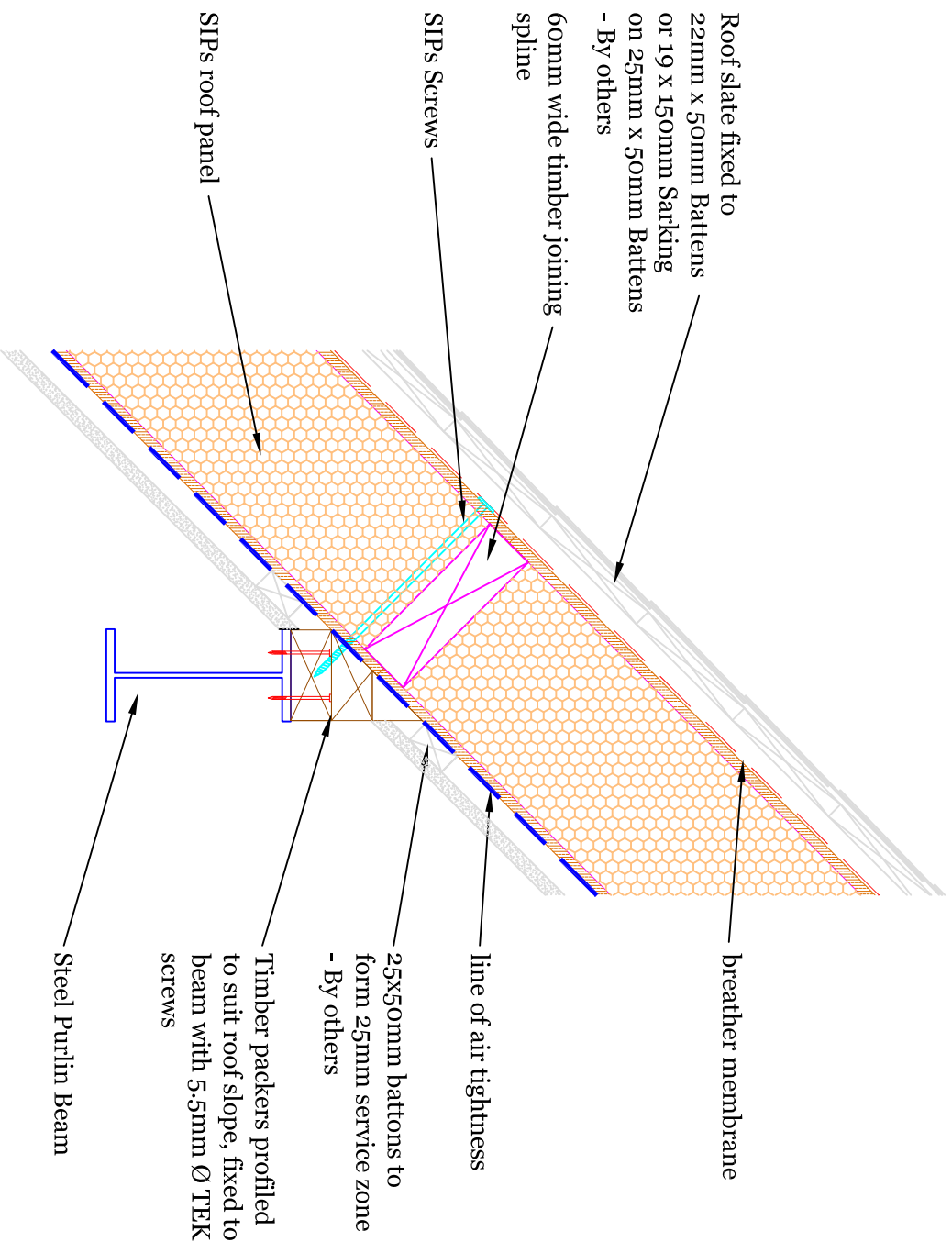
Client

Drawing Title
 Sectional Detail
 Typical Steel Ridge Beam

No.

Scale
 NTS
 Drawn By
 MJ

Date
 01.03.13



Sectional Detail - Typical

Steel Purlin Beam



CROSSWAY LTD EST
DULVERTON
NPT 23 12006
PAK 01380 822818
Email: info@sipsindustries.com
www.sipsindustries.com

THIS DRAWING IS COPYRIGHT AND
AUTHORISATION FROM SIPS INDUSTRIES LTD

Job

No.

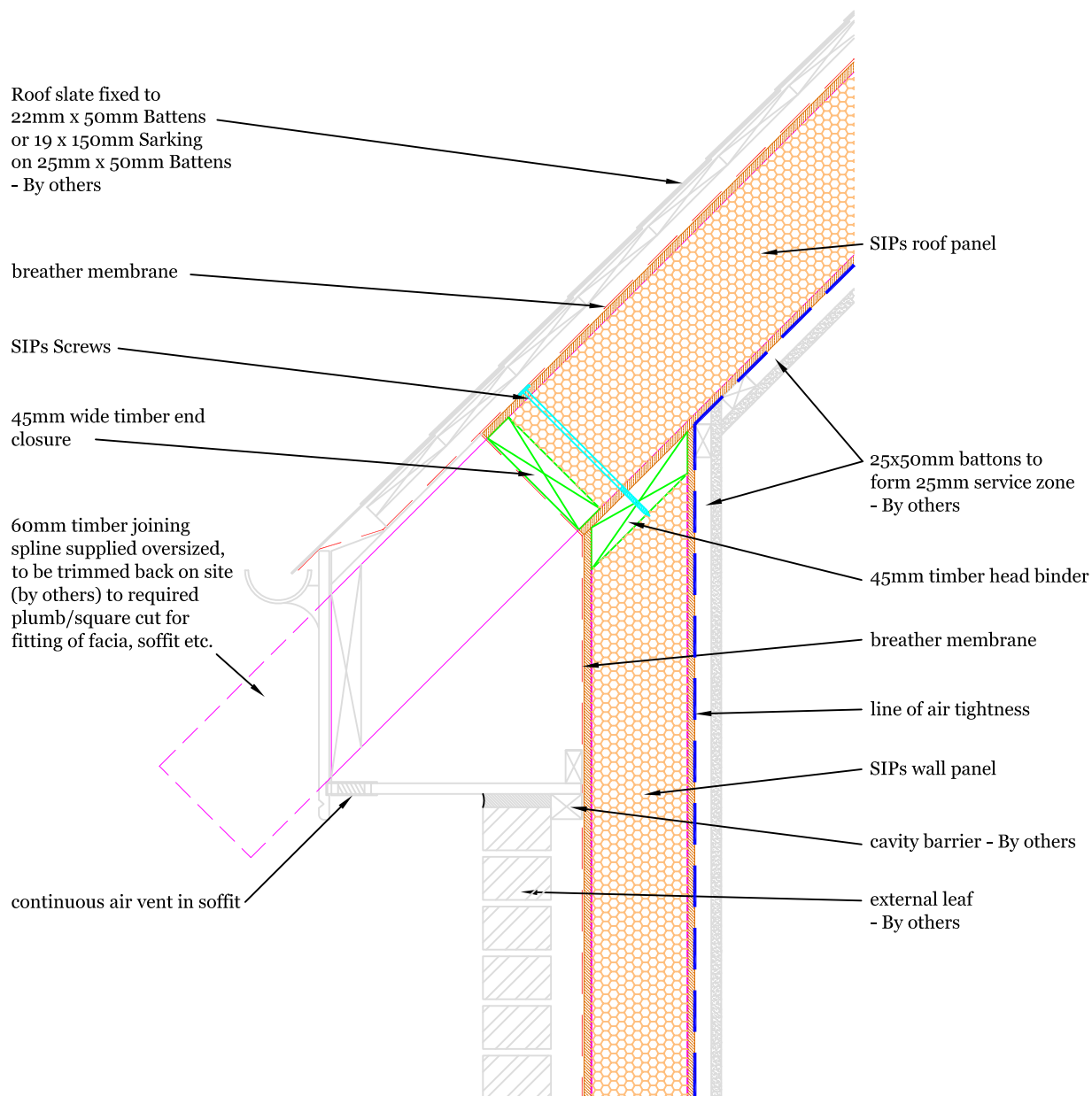
Client

Drawing Title
Sectional Detail
Typical Steel Purlin Beam

Scale
NTS

Drawn By
MJ

Date
01.03.13



Sectional Detail - Typical Roof Eaves

Job

THIS DRAWING IS COPYRIGHT AND
AUTHORIZATION FROM SIPS Industries Ltd

No.

Scale

NTS

Drawn By

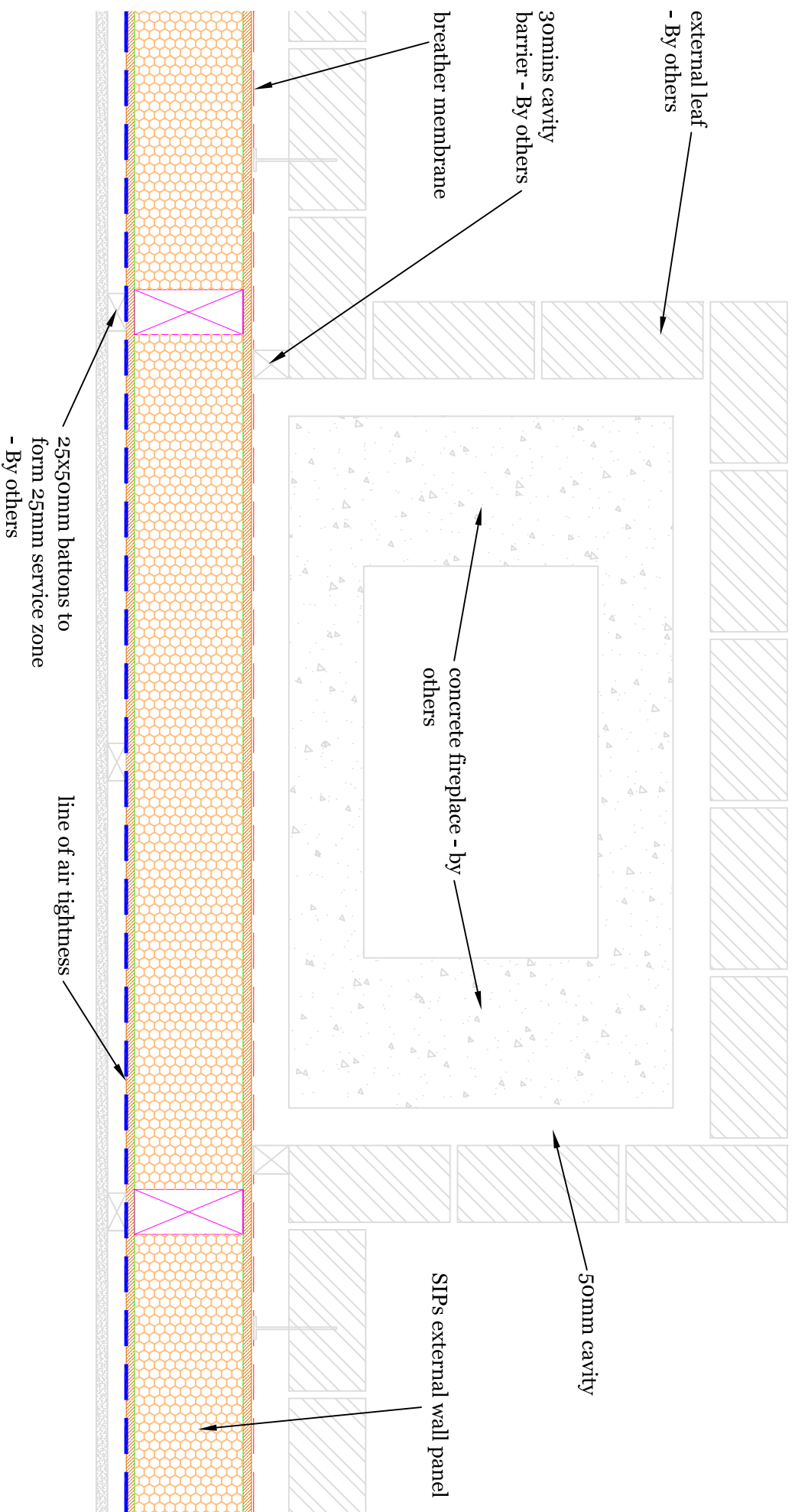
MJ

Date

01.03.13

Client

Drawing Title
Sectional Detail
Typical Roof Eaves



Plan Detail - Typical Fireplace layout, First Floor Level



CROSSWAY LTD EST
DULVERTON
KENT TN11 8EE
Tel: 01883 822806
Email: info@sipsindustries.com
www.sipsindustries.com

THIS DRAWING IS COPYRIGHT AND
AUTHORISATION FROM SIPS INDUSTRIES LTD

Job

Client

Drawing Title

Plan Detail
Typical Fireplace layout, First Floor Level

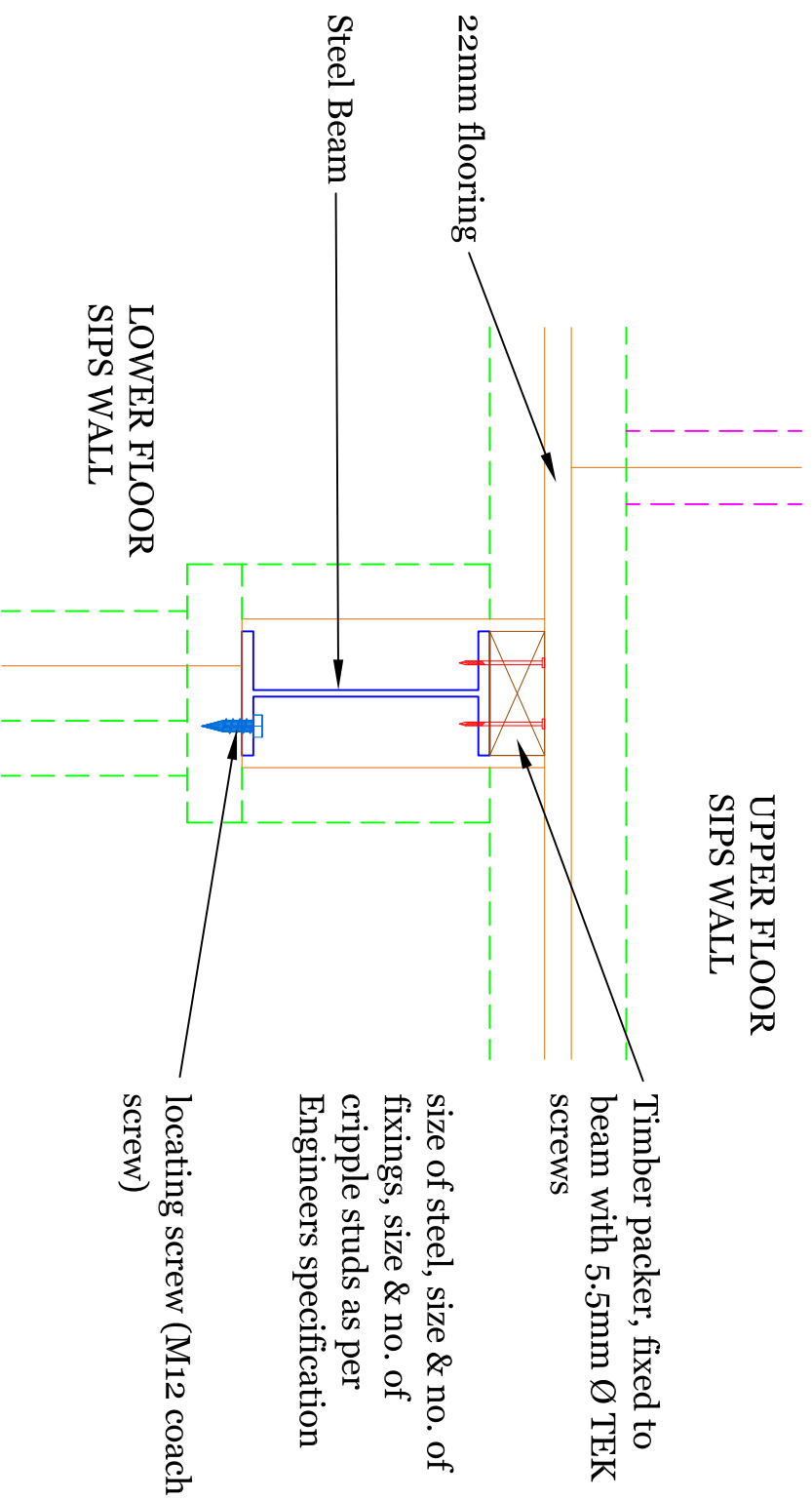
No.

Scale

Drawn By

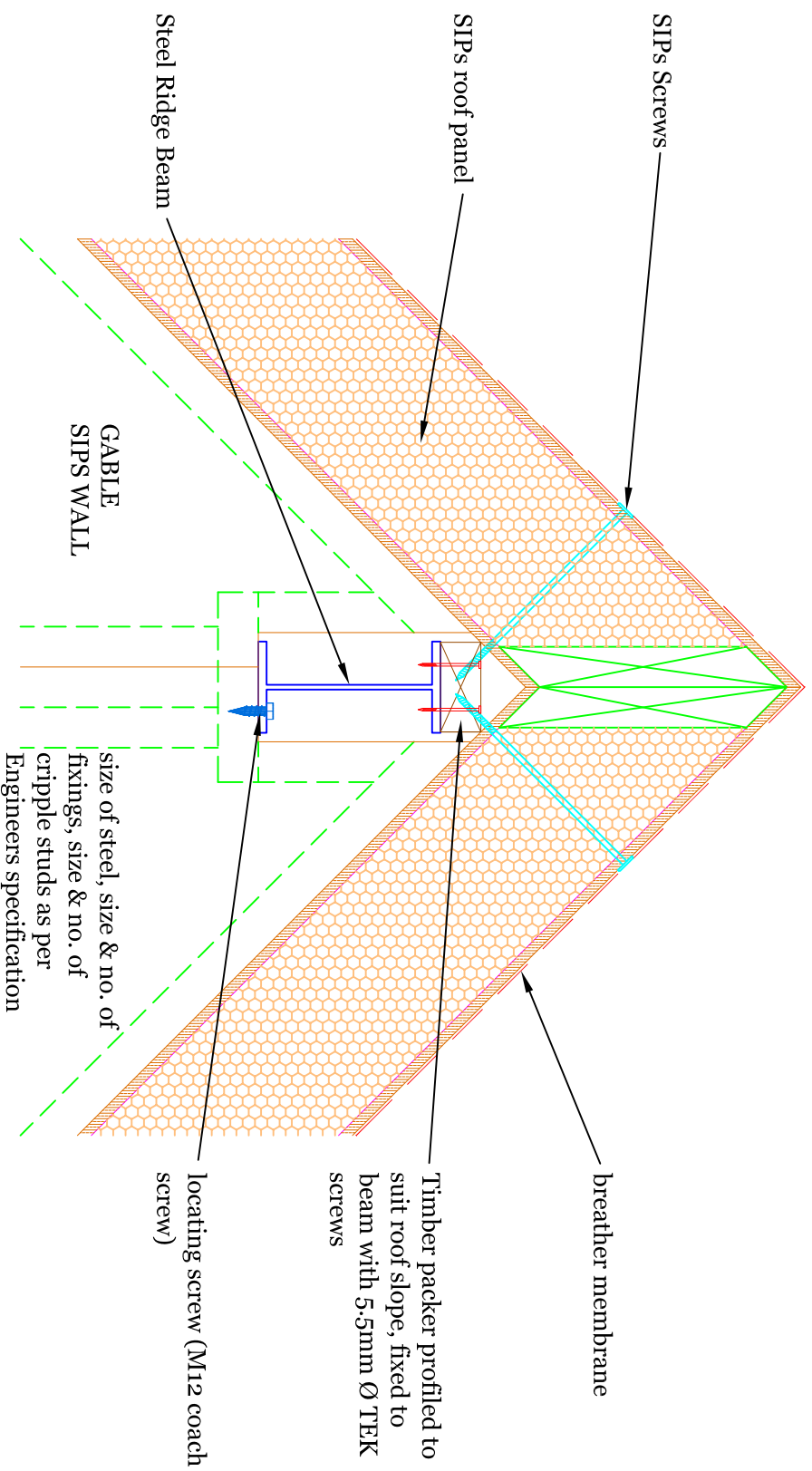
Date

NTS MJ 01.03.13



Elevational Detail - Typical Steel Beam Support @ Floor Level

<small>THIS DRAWING IS COPYRIGHT AND AUTHORIZATION FROM SIPS INDUSTRIES LTD</small>		Client	
		Job	Drawing Title Elevational Detail Typical Steel Beam Support @ Floor Level
No.	Scale	Drawn By	Date
	NTS	MJ	01.03.13



Elevational Detail - Typical Steel Beam Support @ Ridge



CROSSWAY INDUSTRIAL
 DULVERTON ROAD
 KENT TN11 8JG
 TEL: 01883 822916
 EMAIL: info@sipsindustries.com
 WWW.SIPSINDUSTRIES.COM

THIS DRAWING IS COPYRIGHT AND
 AUTHORIZATION FROM SIPS INDUSTRIES LTD

Job

Client

Drawing Title
 Elevational Detail
 Typical Steel Beam Support @ Ridge

No.

Scale
 NTS

Drawn By
 MJ

Date
 01.03.13